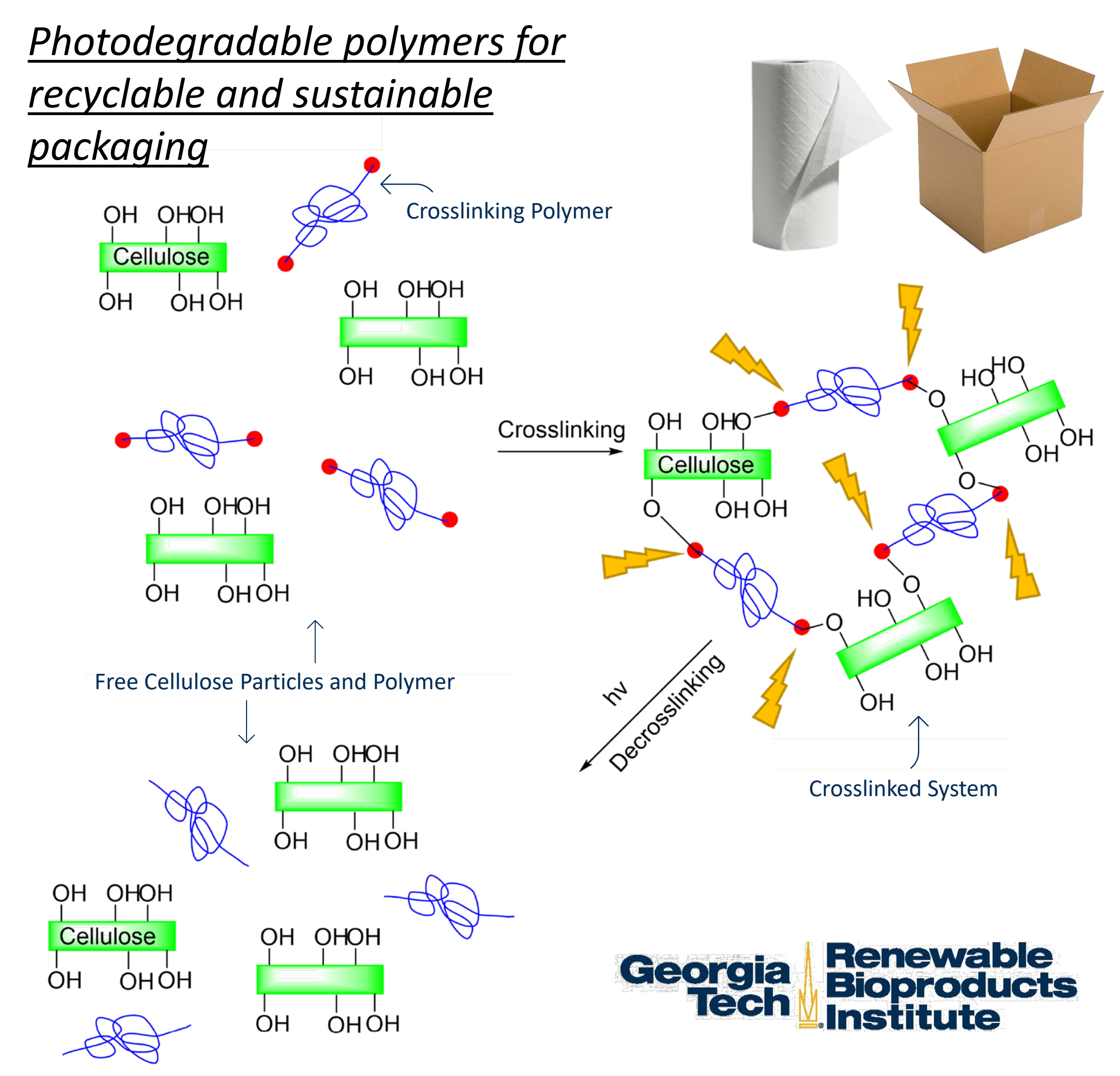
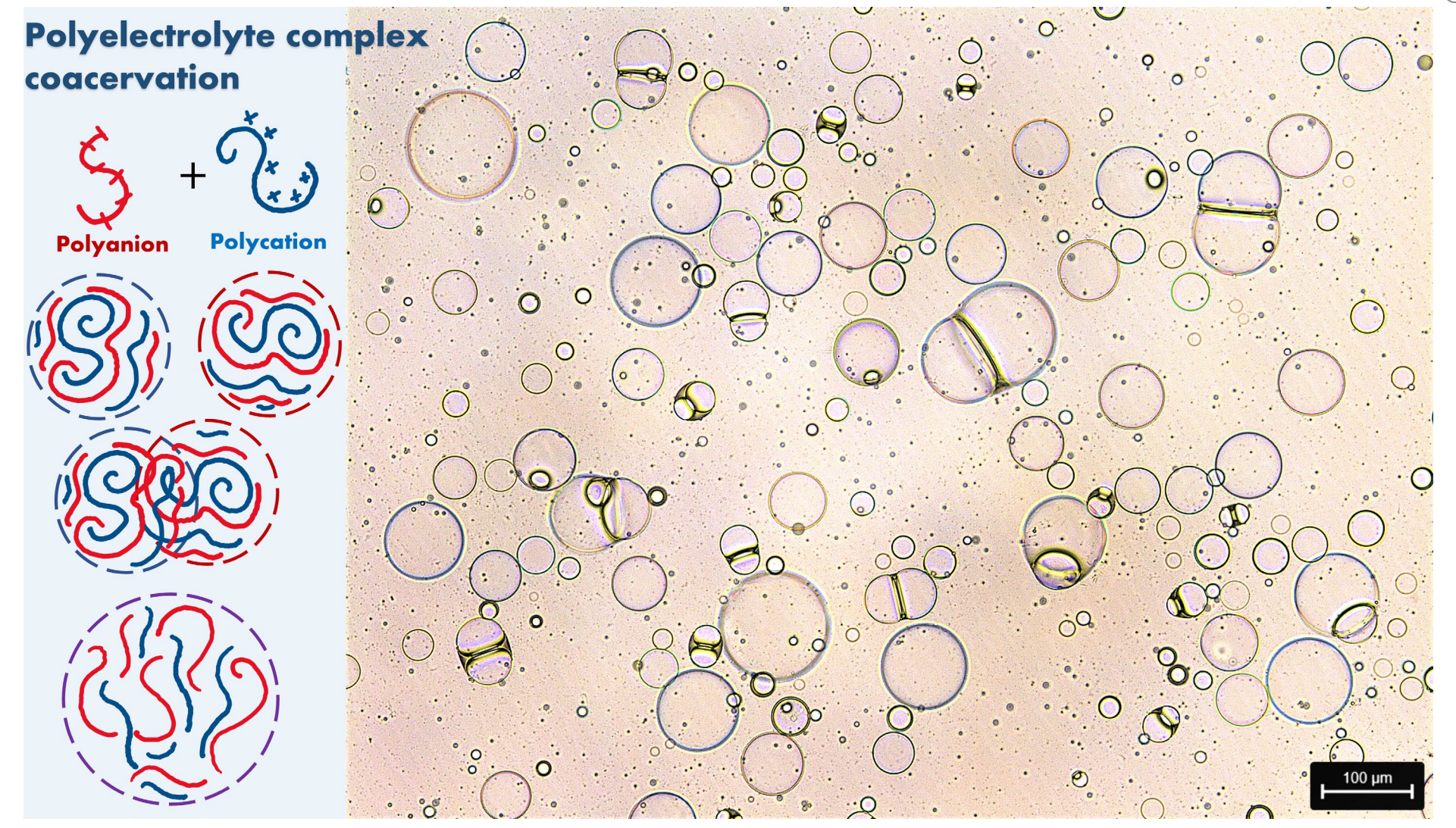
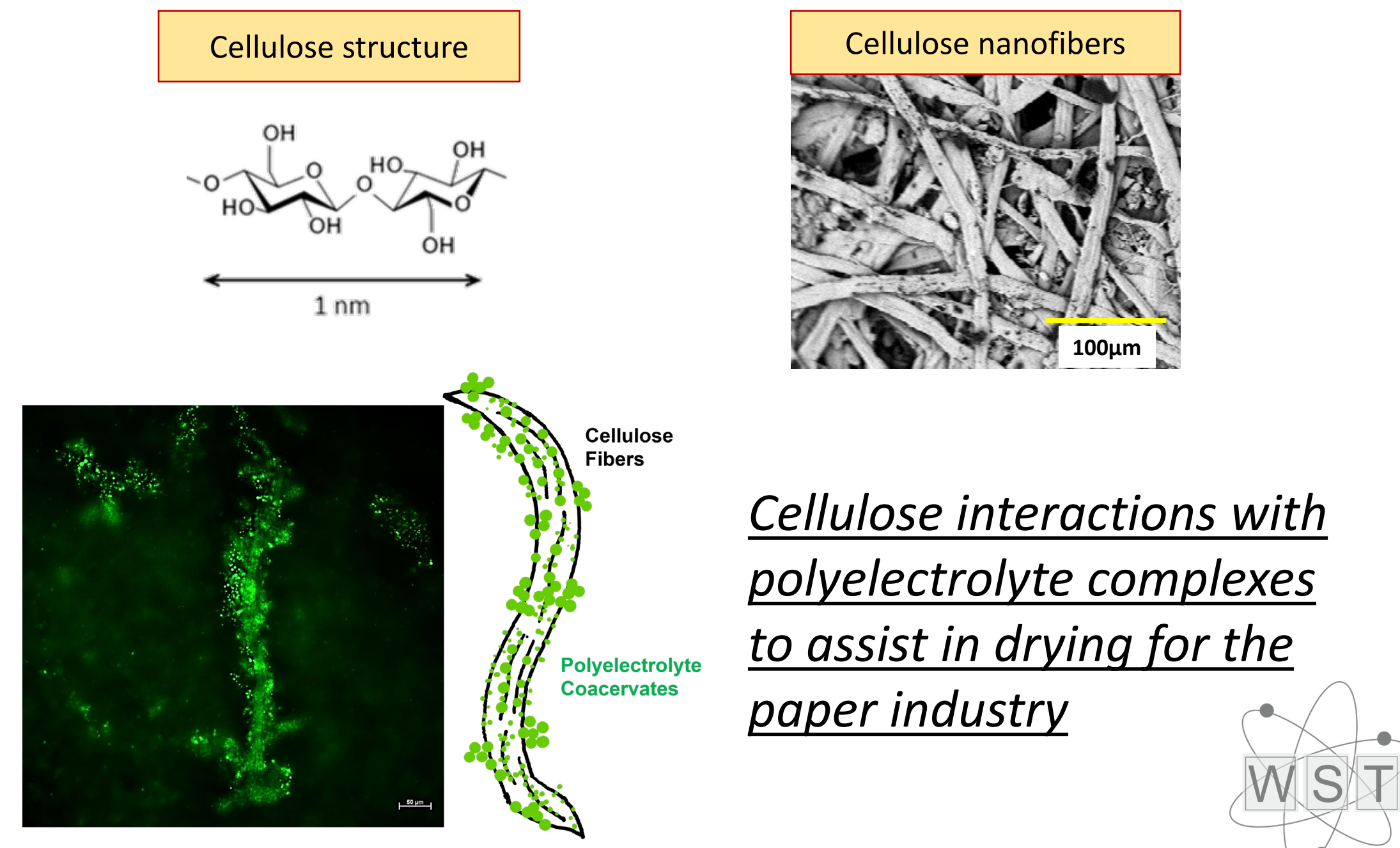
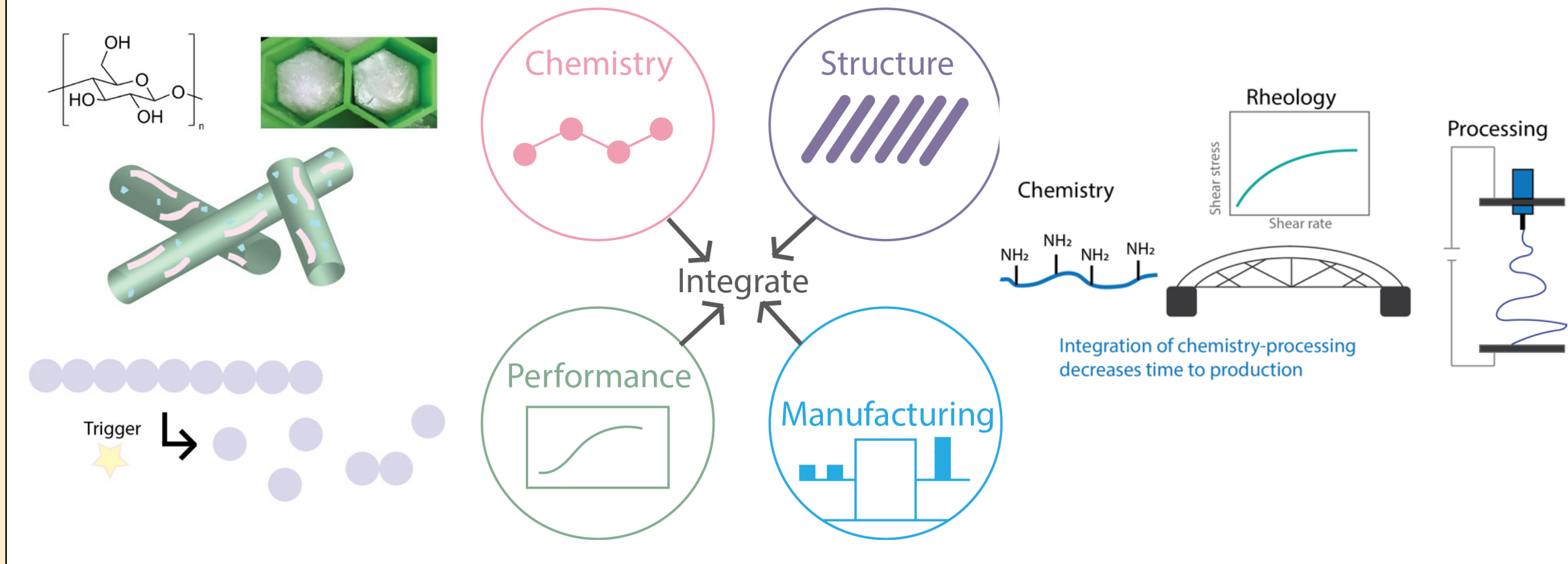


## MOLECULAR INTERACTIONS WITH CELLULOSE



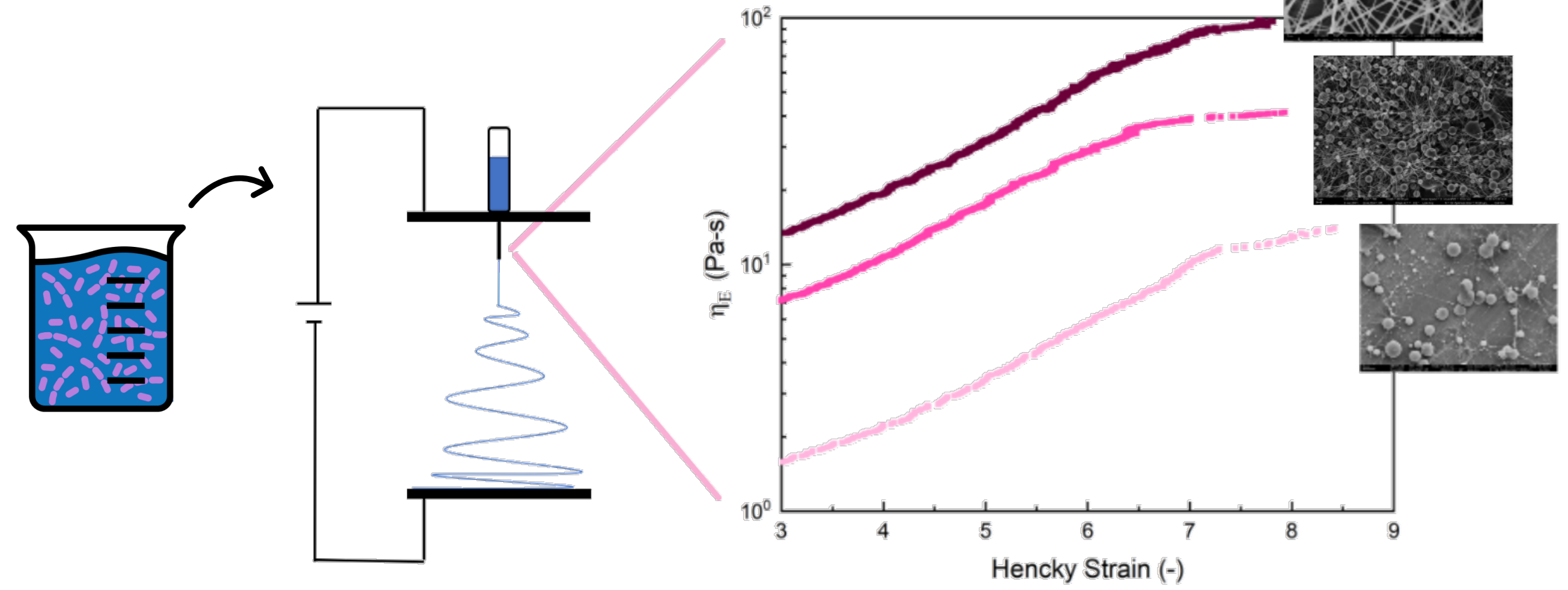
## APPROACH TO PRODUCT AND PROCESS DEVELOPMENT FOR COMPLEX SYSTEMS

Research Focus: Link molecular to micron scale phenomena to processing and multicomponent complex mixtures to enable rapid product development

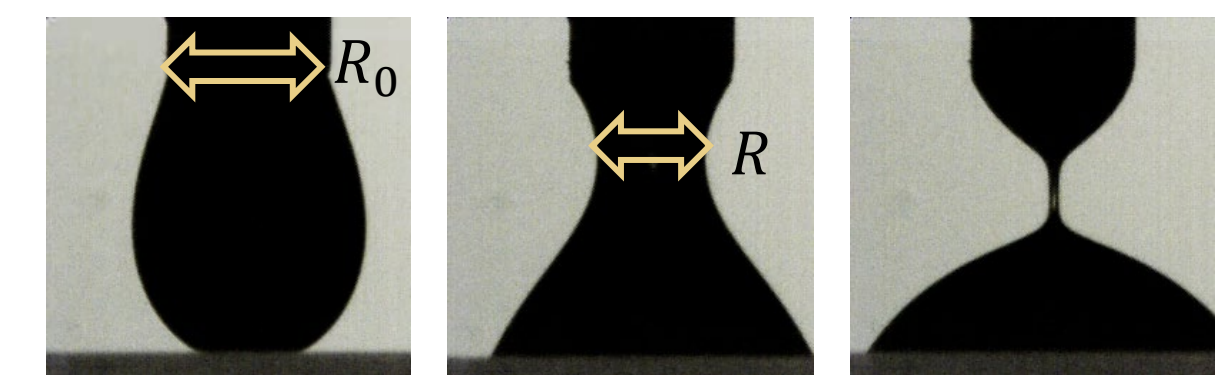


## ELECTROSPINNING WITH NEW MATERIALS

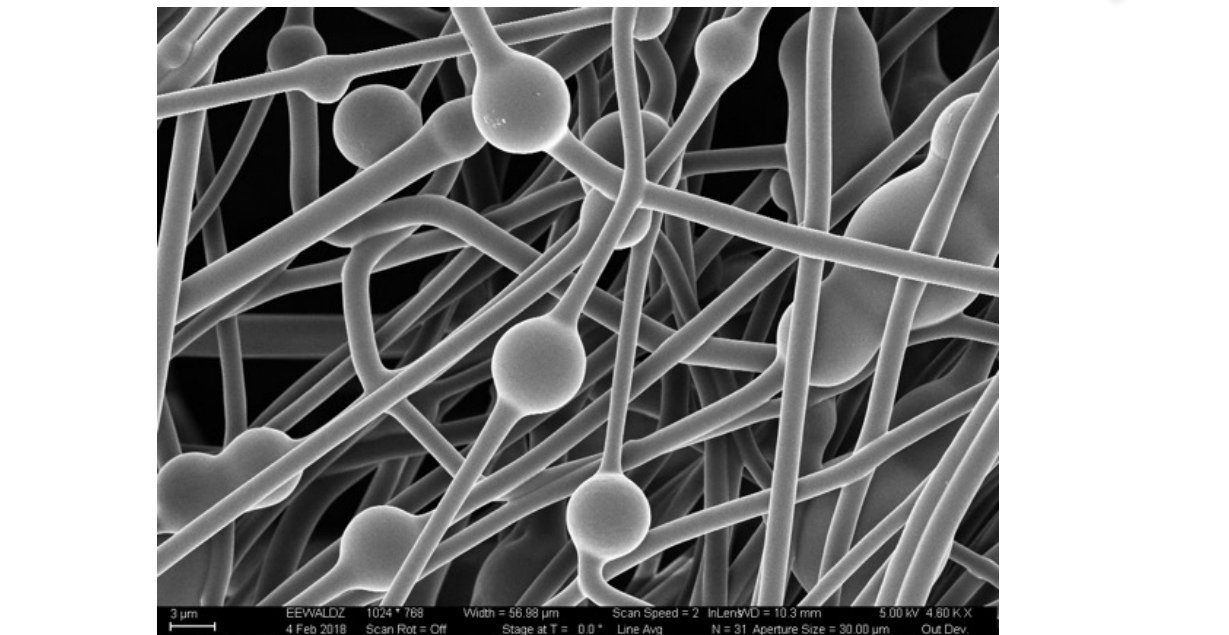
Electrospinnability limits through extensional viscosity



Extensional viscosity to assess jet stability and fiber spinnability

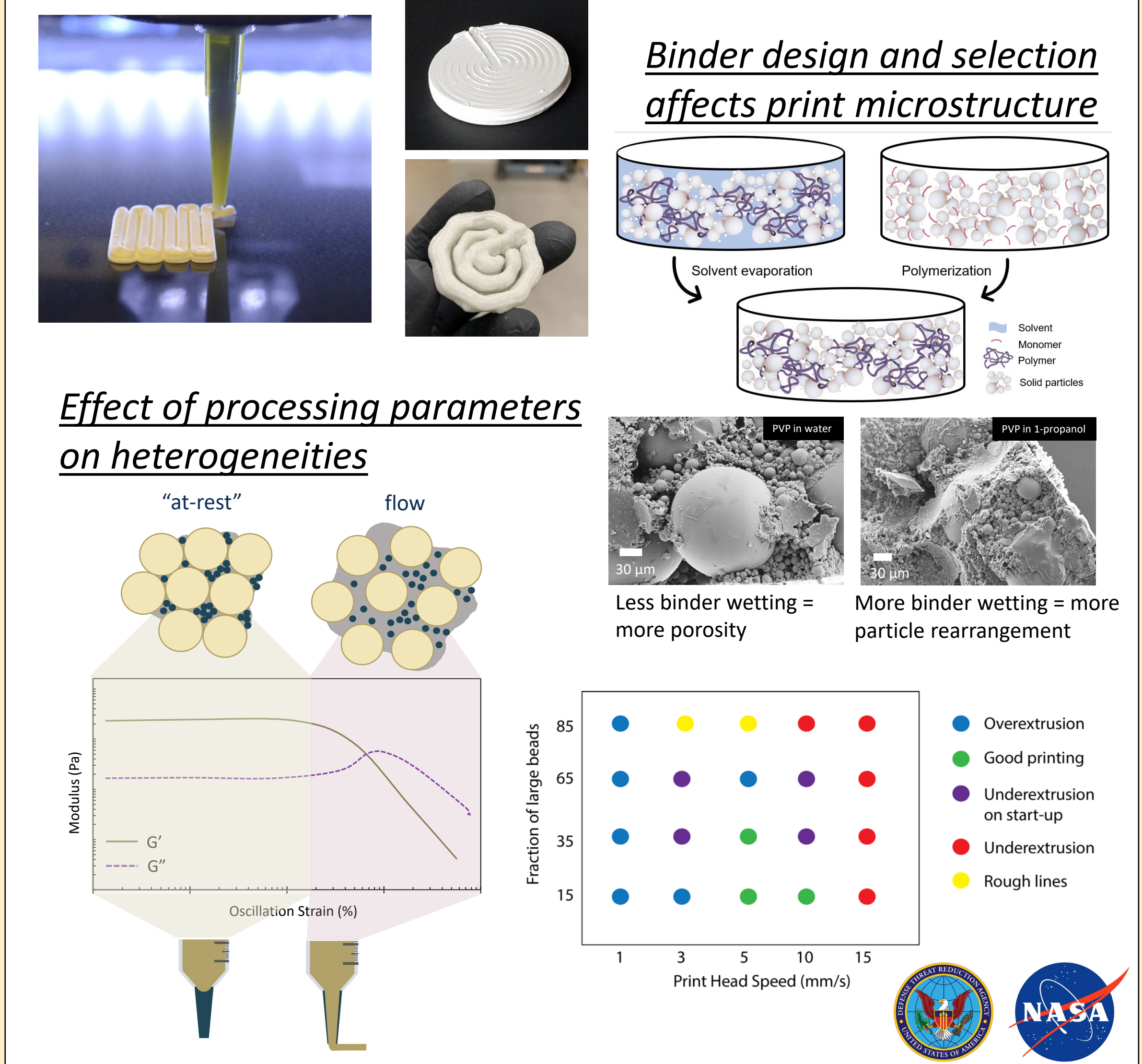


Elapsed Time



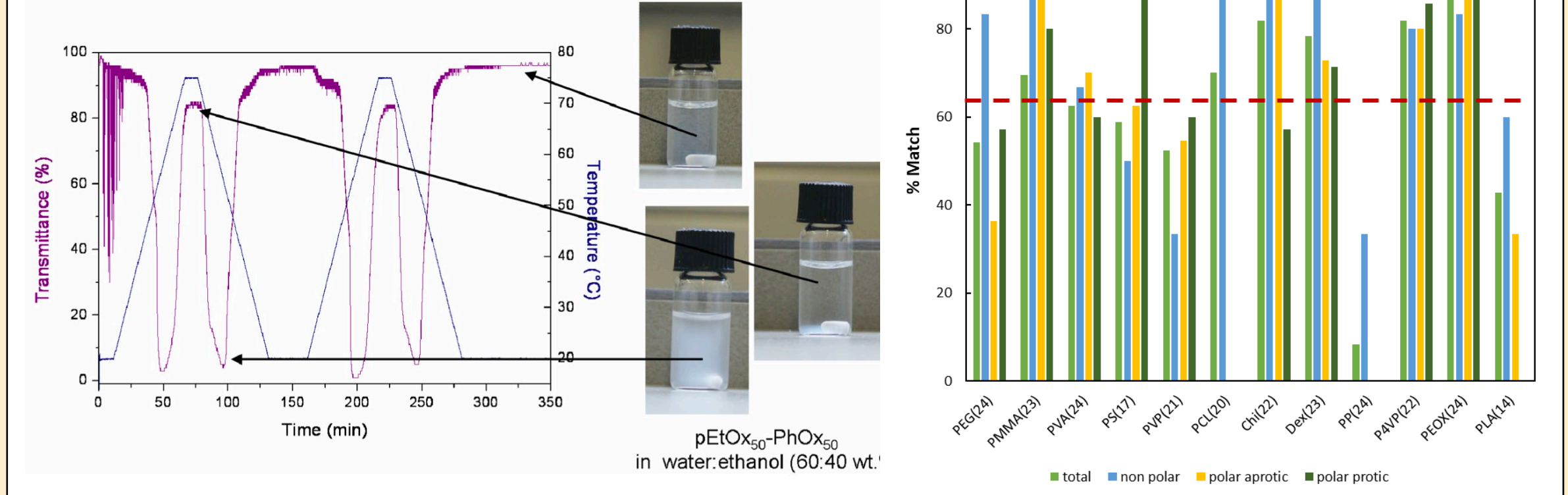
Incorporation of functionalized particles in spun fibers

## ADDITIVE MANUFACTURING OF HIGHLY LOADED COMPOSITES



## DESIGN OF RESILIENT AND DEPOLYMERIZABLE POLYMERS

Validating the Polymer Genome Prediction Model



Developing chemically recyclable and depolymerizable polymer composites

